



Android 6.0

1D/2D Barcode Scanner

5 Inch Display

NFC

Fingerprint Sensor

4G/LTE

GPS

Camera

USB

Bluetooth 4.0

WLAN

# LogiScan-1700

Compact Terminal



robust • compact • ergonomic



## Specifications

Dimension, Weight	163.8 x 79,2 x 13.8 mm (L x B x W), 230 g
Display	5.2 inch, high resolution (1920 x 1080)
Touch Panel	Robust, capacitive Touch Panel, tolerates the operation with gloves and wet hands
Keyboard	4 front Keys, 1 side keys, 2 scan keys, 1 multi function keys
Battery	Li-Ion battery, 3800 mAh
Extension Slots	1 SIM Slot, 1 Slot for SIM or TF Card
Audio	Speaker, 2 Microphone
Interfaces	USB
CPU, RAM, Memory	Cortex-A53 1.3 GHz Quad-Core, 2 GB RAM, 16 GB ROM, with Micro-SD by max. 32 GB expandable
Operating System, SDK, Language Tool	Android 6.0, Software Development Kit, Java, Android Studio
WLAN	IEEE802.11 a/b/g/n
WWAN & Voice	2G: 850/900/1800/1900MHz 3G: 850/900/1900/2100MHz 4G: B1, B3, B5, B7, B8, B20, B40
WPAN	Bluetooth 4.0, BLE
GPS	A-GPS
Camera	13 Megapixel, autofocus, with flash
Sensors	Gravity, light and proximity sensor, vibration motor
1D/2D-Imager (optional)	ZEBRA SE4710, all common 1D symbologies and following 2D codes: PDF417, MicroPDF417, Composite, RSS, TLC-39, Datamatrix, QR code, Micro QR code, Aztec, MaxiCode; Postal Codes: US PostNet, US Planet, UK Postal, Australian Postal, Japan Postal, Dutch, Postal (KIX), etc.
NFC	13.56 MHz, Protocol: ISO/IEC 18092 (ECMA 340) and ISO/IEC 21481 (ECMA 352), range 2 - 4 cm
Iris Recognition (optional)	Rate < 150 ms, Range 20 - 40 cm, FAR ( False Acceptance Rate) 1/10.000.000
Environmental Conditions	Operating temperature -20 to 50° C, storing temperature -40 to 70° C, relative humidity 5 bis 95%, not condensing
Drop Specification	Withstands multiple falls from a height of 1.8 m to concrete over the entire temperature range, it withstands 1000 drops from a height of 0.5 m at room temperature
Protection Class	IP65

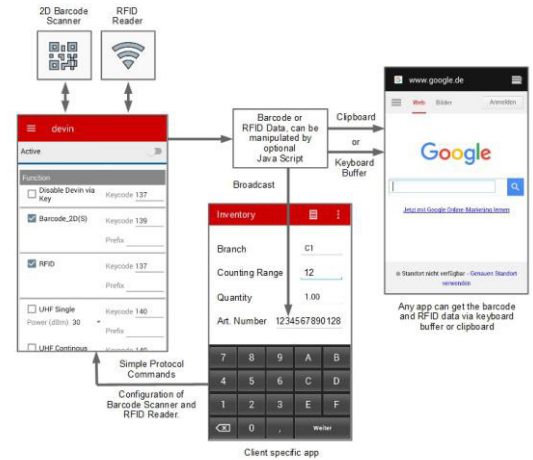
# Android Apps for LogiScan-15xx/17xx/2000

## devin

### Barcode and RFID Management

The Android app devin allows the transfer of the scanned barcode scanner or RFID reader data of an android-based LogiScan to the keyboard buffer or the clipboard. Alternatively, a broadcast message is possible. Thus, the bar code scanner and RFID reader can serve as a data source for each app.

- Each input device can be activated separately.
- To each input device a key code (can be determined with the Keyboard app from the AppCenter) and a prefix can be assigned.
- If barcodes and RFID tags are to be provided for any existing applications and web pages that do not have any influence on programming, the keyboard buffer is recommended. That means that barcodes and transponder tag IDs appear as keyboard input for the app.
- Prefixes and suffixes can be defined common for all input devices.
- The passed string can be completed with Enter or Tab.
- Scanned data can be output as a message.
- Apps can change the scanner settings.
- If no bar code read and this option is enabled, the scanner turns off when you release the button, if the other switches off after a timeout..



## aiBrowser

### HTML5 Android Web Browser for Barcode and RFID Applications

The Android app aiBrowser interacts with the Android app devin and allows the transfer of the scanned barcode scanner or RFID reader data of an android-based LogiScan into web applications. The aiBrowser is HTML-5 compliant and is useful for modern JavaScript-based web applications (such as Microsoft Dynamics NAV). The optional kiosk mode prevents access to the system.

The aiBrowser offers, among others, the following functionality:

- Default URL to be called when aiBrowser is started can be set.
- Transfer of the scan data using JavaScript function call or by KeyUp / KeyDown events.
- Auto-login functionality for password-protected web pages.
- Save and load the settings into / from configuration file.



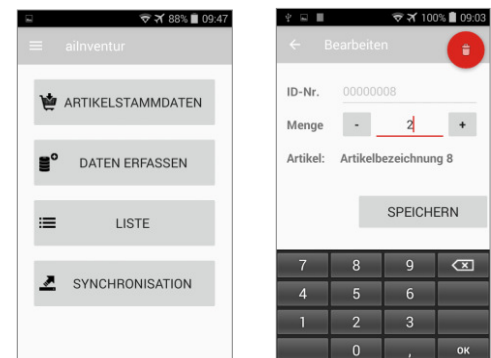
## aiMDE

### Demonstration of Barcode Scanner and RFID Reader, performing simple Inventory

The Android app aiMDE interacts with the Android app devin. aiMDE is used for the demonstration of barcode scanners and/or RFID readers and can be used for simple inventory with android based LogiScan.

aiInventur offers inter alia the following functionality:

- Load item master data.
- Entry of item number and quantity.
- View the list of collected data.
- Correction of captured data.
- Data synchronization with FTP server or Windows software MTPWin.



### Docking Station

Used to charge the LogiScan-1700. Data can be exchanged via USB or LAN (optional).

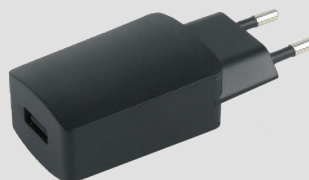
Art. No. 30900030 (with USB/LAN)

Art. No. 30900031 (only charging function)



### AC Adapter

Art. No. 30900021



### USB C Cable to USB Type A

Art. No. 80034006

