



MTWin-4

Operating Manual

Manual

We deliver not just our Mobile Terminals with Standard Software...

but also develop to customers wishes

- Applications for this units
- PC Applications
- Hardware

and advise you on

- Creating concepts for mobile data collection,
- Queries surrounding the Bar code,
- Hardware problems,
- PC-Problems.

Please consult us with your queries or problems at:



aitronic GmbH
Balhorne Feld 10
D-33106 Paderborn
Germany

Telephone: +49 (0) 5251 29816-0
Telefax: +49 (0) 5251 29816-40
Internet: <http://www.aitronic.de>
E-Mail: info@aitronic.de

Copyright © aitronic GmbH, 2014

All Rights reserved, in particular all extracts which correspond to the translation, the reprint and reproduction by copying or similar methods.

Delivery and technical changes are subject to change.

Edition History

Edition	Changes
19.05.2011	First Editon

General 1

Licence Agreement 1

M16Start Installation 2

Main Window 2

Option Window 3

Solving of Communication Problems..... 4

General

M16Start is contained in the standard software package and is delivered by aitronic together with the hardware and is required for the mobile terminals firmware update (new device series: LogiScan-600/800/100/PocketScan/HTE-200).

MTWin-4 requires Windows 95 or higher.

Licence Agreement

You are allowed to install and use a copy of this software product on your computer.

You are not allowed to decompile or disassemble this software product.

You can carry over your user rights at licensed software wholesome to a third person. Therefore it is required to carry over all parts and copies of this software ore to destroy the parts which are not carried over. Please notice that you are not allowed further using the software after having carried over your user rights.

The reparation of further damages is excluded. This applies especially to profit loss or data loss or missing usability of the software also as to direct or indirect following damages.

aitronic doesn't guarantee the errorfreeless of the software or the documentation.

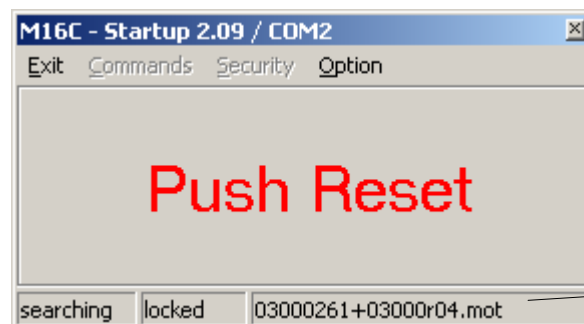
In case of differing or missing arrangement in this lincence agreement aitronic reserves all further rights itself.

M16Start Installation

M16Start is required for the mobile terminals (HTE-200, LogiScan und PocketScan family) firmware update. There are two ways for the installation of M16Start:

- Download M16Start from the download area of our website www.aitronic.de, open it and follow the installation instructions.
- Use an appropriate CD, which contains a directory M16Start. Execute M16Start_setup.exe and follow the installation instructions.

Main Window



Name of the
file to load

Exit

Terminate M16Start

Commands

..... **Download**

Manual selection of the firmware to be loaded after reset of the mobile terminal, if M16Start was started by executint the EXE file.

..... **Version**

Calling the version from the connected mobile terminal.

Security

If the SKY file contains an invalid key, these functions provide key entry or key calculation.

Attention: The key prevents loading of invalid firmware. Therefore these functions should only be used in special cases.

..... **Key Input**

Key entry

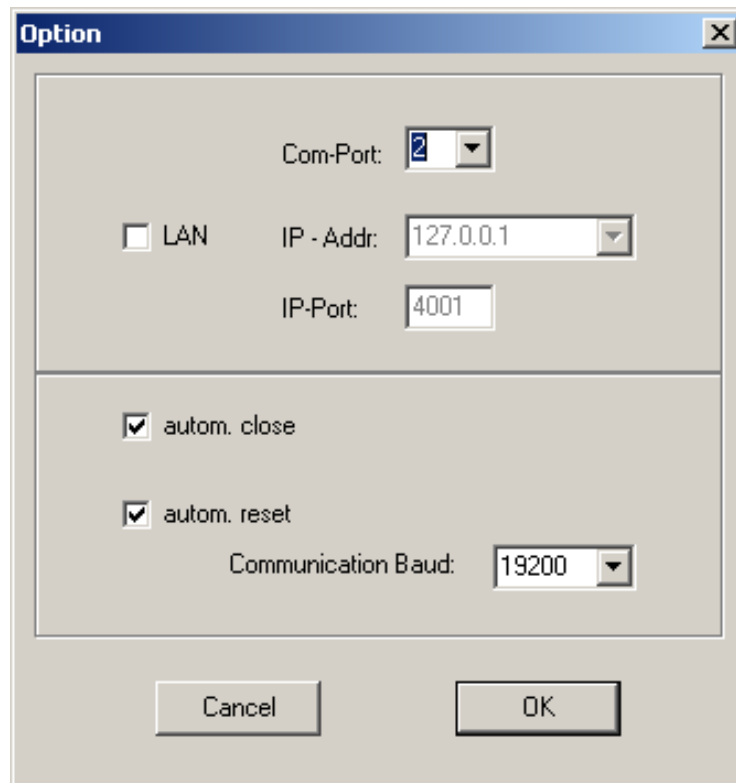
..... **Calc Download Key**

Automatic key calculation

Option

Opening the Option window

Option Window



Com-Port	No. of the Com port to which the mobile terminal is connected.
LAN	Activate a LAN connection
IP-Addr IP-Port	IP address and port of the cradles to which the mobile terminal is connected.
autom. close	Automatic termination of M16Start after firmware update after about 30 seconds
autom. reset	Automatic reset of the connected mobile terminal (functions only with the communications port, not with the debug port)
Communication Baud	Baudrate of the connected mobile terminal

Solving of Communication Problems

1. Is the port selected in the Option window to which the mobile terminal is connected?
2. Is the baudrate selected in the Option window with which the mobile terminal communicates?
3. Shows Windows for the relative port under `Systemsteuerung/System/Hardware/Gerätemananger/Anschlüsse` a problem? If it's so, this problem has to be solved (perhaps by installing the appropriate driver).
4. If there are no port problems, the mobile terminal does not react and no firmware update is possible, please try to load the file `Defibrillator.mot`. Loading of this file with M16Start clears the program flash. After that the actual firmware update has to be performed. This file is also contained within the standard program directory for LogiScan-600/800/1100/PocketScan/HTE-200 of the aitronic CD or may be downloaded from Support/Downloads of the aitronic website www.aitronic.de.