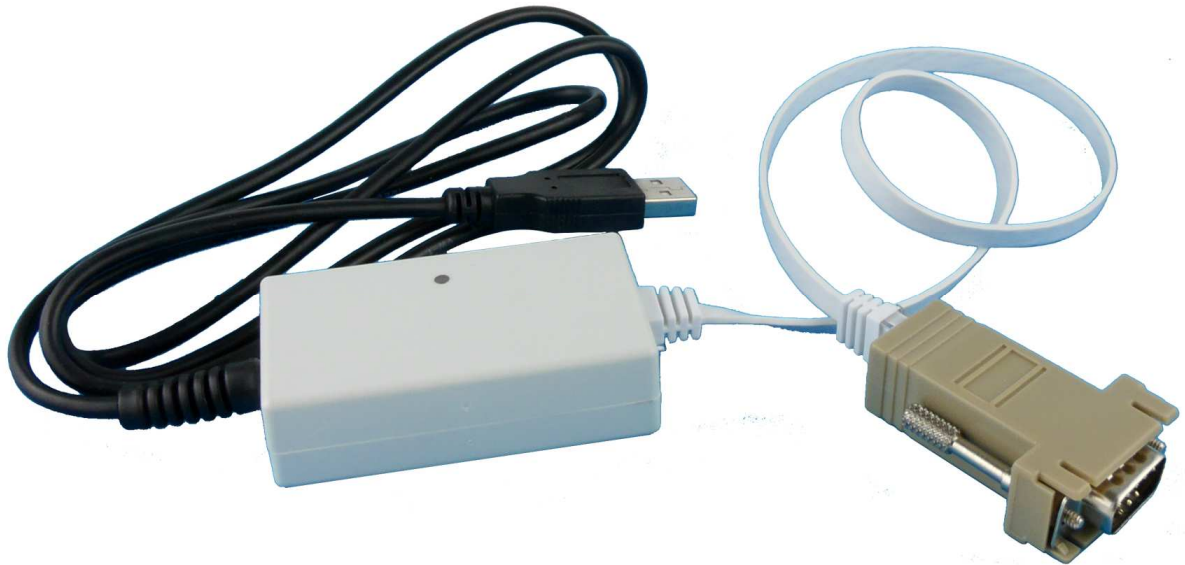




**Serial HID Adapter
Operating Manual**
Edition 03.07.2018

Manual



Serial HID Adapter
Operating Manual
Edition 03.07.2018

1. Connecting to a PC's USB female Connector	1
2. Serial2HIDUtility	2
General.....	2
Licence Agreement	2
Installation	3
Start Window	3
RS-232 Parameter	4
MTWin Parameter	5
General Parameter.....	5
Hint for Testing the Data Transmission with Editor	5
Firmware Update.....	6
3. Recycling of old devices and accessories	7

We deliver not just our Mobile Terminals with Standard Software...

but also develop to customers wishes

- Applications for this units
- PC Applications
- Hardware

and advise you on

- Creating concepts for mobile data collection,
- Questions coming up with barcode and RFID,
- Hardware problems,
- PC-Problems.

Please consult us with your queries or problems at:



aitronic GmbH
Balhorne Feld 10
D-33106 Paderborn

Germany

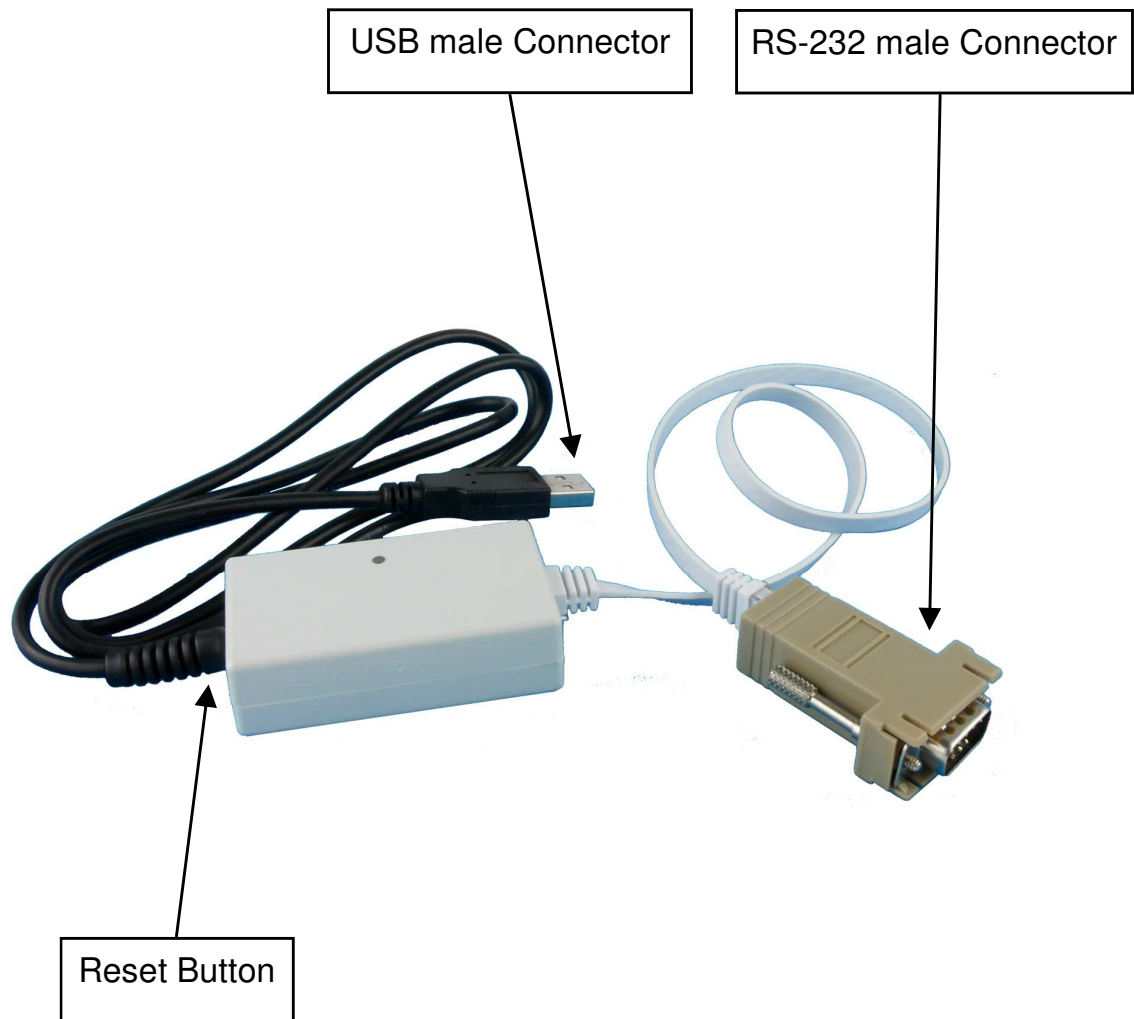
Telephone: +49 (0) 5251 29816-0
Telefax: +49 (0) 5251 29816-40
Internet: <http://www.aitronic.de>
E-Mail: info@aitronic.de

Copyright © aitronic GmbH, 2018

All Rights reserved, in particular all extracts which correspond to the translation, the reprint and reproduction by copying or similar methods. Delivery and technical changes are subject to change.

1. Connecting to a PC's USB female Connector

- Connect USB male connector to a free USB female connector of the PC.
- With Windows 98/ME the HID driver has to be installed (Windows CD) in order that the Serial HID Adapter will be recognized as a keyboard.



2. Serial2HIDUtility

General

The ACR-320 Utility is delivered free of cost when purchasing one or more ACR-320 Card Reader from company aitronic and is required for firmware update and configuration of the ACR-320 Card Reader.

ACR-320 Utility is executable from Windows XP and higher.

Licence Agreement

You are allowed to install and use a copy of this software product on your computer.

You are not allowed to decompile or disassemble this software product.

You can carry over your user rights with a licensed software wholesome to a third person. Therefore it is required to carry over all parts and copies of this software ore to destroy the parts which are not carried over. Please notice that your are not further allowed to use the software after having carried over your user rights.

The reparation of further damages is excluded. This concerns especially to profit loss or data loss or missing usability of the software also as to direct or indirect following damages.

aitronic doesn't guarantee the errorfreeless of software or documentation.

In case of differing or missing arrangement in this lincence agreement aitronic reserves all further rights itself.

Installation

To install the Serial2HIDUtility load the Serial2HIDUtility's setup from our website www.aitronic.de below Support/Downloads, open it and follow the installation instructions.

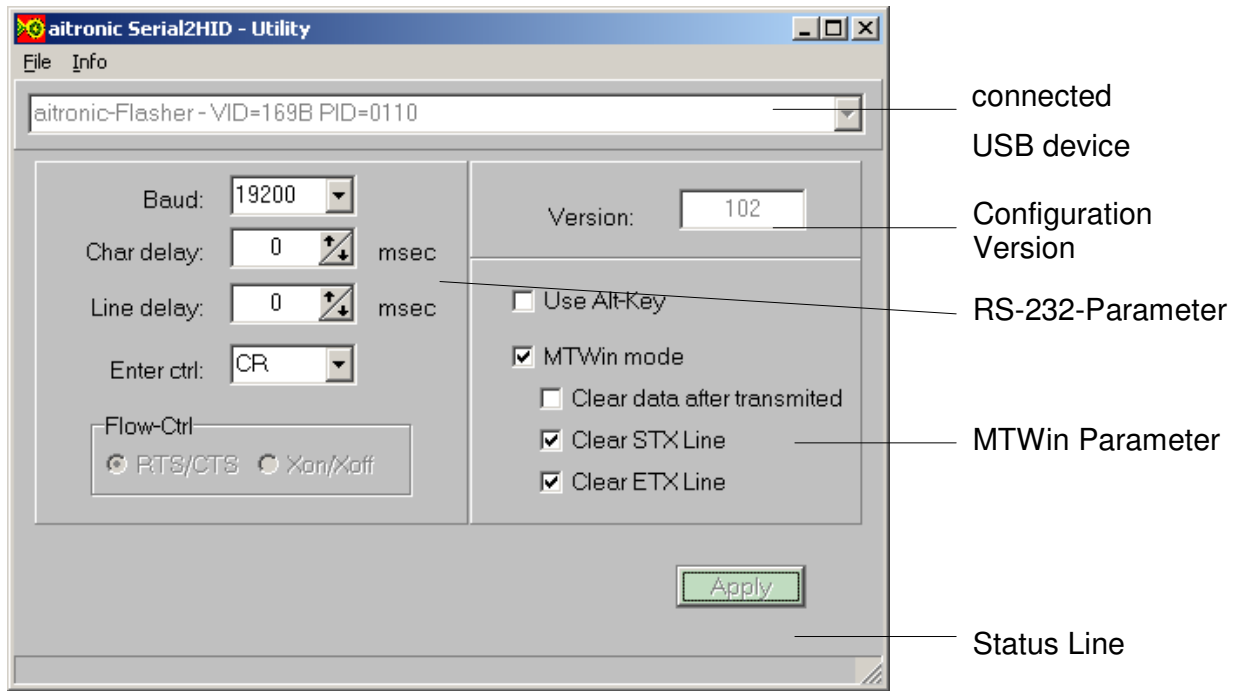
Start Window

Having started the Serial2HIDUtility it will prompt you to connect and reset the Seriell HID Adapter.



For configuration the Seriell HID Adapter has to be connected to a USB port. As soon as the Seriell HID Adapter's LED flashes green the reset button (5), behind the small hole beside the USB cable connection, has to be pushed one time (i.e. by means of a bended up paper-clip). After that the LED flashes alternately green and red.

The Seriell HID Adapter now resides in configuration mode and the Serial2HIDUtility displays the following window:



RS-232 Parameter

- Baud** The baudrate may be set between 1200 and 115.200 Bd.
- Char Delay** Time delay in milliseconds between the charactes which are sent to the keyboard output.
- Line Delay** Time delay in milliseconds between the lines which are sent to the keyboard output.
- Enter ctrl** The control characters CR and LF were removed before data output. Following options for generation of key code ENTER are possible:
OFF no ENTER will be generated
CR CR leads to generation of ENTER
LF LF leads to generation of ENTER
- Flow-Ctrl** The flow control can be set to RTS/CTS (hardware flow control) or XON/XOFF (software flow control). In MTWin Mode Flow-Ctrl ist deactivated, because MTWin Mode takes over the flow control.

MTWin Parameter

MTWin mode Activates MTWin Mode.

Clear data after transmission

Clears the connected device's data memory after having fetched the data. **This parameter should only be activated when taking over of the keyboard data is ensured.** If this parameter isn't set only the data transmission lock of the connected mobile terminal will be set. If taking over of keyboard data has failed, the data could be fetched once more after having resetted the data transmission lock.

Clear STX Line Prohibits storing of the %%STX line into the reception file.

Clear ETX Line Prohibits storing of the %%ETX line into the reception file

General Parameter

Use Alt-Key Use „alternate keys“ for keyboard output. This is recommended when due to the keyboard layouts not all characters are reflected correctly.

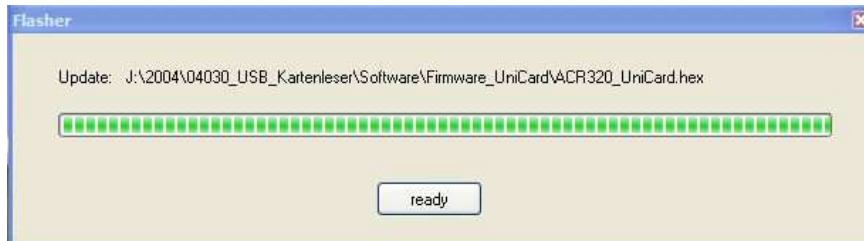
By clicking on push button **Apply** the shown configuratoin will be stored into the Serial HID Adapter. The status line will show „Device Settings updated“.

Hint for Testing the Data Transmission with Editor

In case of testing the data migration with a text editor (i.e. NotePad++) the option „AutoComplete“ has to be disabled. Otherwise characters may be lost.

Firmware Update

The ACR-320 has to reside in configuration mode (refer to chapter „Start Window“). Choose menu item „File/Firmware Update“. A file selection dialog will be opened for choosing the firmware file.



A progress bar will show the update process. At the end of the update the buttons text will change from „please wait“ to „ready“. The programmierung is completed and the ACR-320 will change to „capturing mode“. All configuration settings are preserved after firmware update.

3. Recycling of old devices and accessories

Recycling of old electronic devices and accessories

According to the regulation 2002/95/EC of the European Union a producer of electronic products has to dispose old devices and accessories put on the market under his brand after the 13th August 2005 at his own expense. But in face of the date of purchase we offer to our customers to recycle all their devices they bought from the aitronic GmbH. We pay the costs for the disposal.

Please do not put old electric devices und accessories in the domestic waste or dispose it via any other kind of waste management. Just send us your old devices and accessories to the following address:

aitronic GmbH
Balhorne Feld 10
D-33106 Paderborn
GERMANY / ALLEMAGNE

Please mark your shipment as a delivery of old devices!

If you have any questions do not hesitate to contact us.

fon +49 5251 29816-0
email info@aitronic.de